

1. Welcome and call meeting to order at 7:05 pm.

2. Adoption of September 1, 2010 Minutes

Motion to accept the September Minutes was proposed; adopted by Susan Brandl, seconded by Wendy Thompson. All were in favor.

3. Treasurer's Report

Lois Brown provided the following financial reports for September:

Revenue:	\$ .20
Expenses incurred:	B.C. Council of Garden Clubs (2 registrations): \$44.00
	Refreshments: <u>\$20.19</u>
	\$64.19
Expenses over revenue:	-63.99
Bank account balance, including term deposits:	\$14,456.83

Motion to accept this report was made by Don Wrigley, seconded by Keith Harris. All were in favor.

4. Old/New Business

Lanny Hui, standing in for Judy Wellington, reported on the following:

- The cheque to Burnaby Mountain Secondary School Urban Community Project has not been cashed due to a change in leadership with this project; therefore, the project is put on hold. They were very appreciative of our donation and are endeavoring to resurrect the project, hopefully by January.
- Burnaby Arts Council (BAC) has expressed an interest in collaborating with BRAGS in an event which could join a garden tour and art open house for next year. Claire Halpern, spokesperson for BAC, hopefully will attend our next BRAGS meeting. Handouts were given out explaining the proposal. Please come prepared at our November meeting for a question and answer session.
- \$1.00 off coupons were offered to the upcoming Fraser Valley Orchid show to be held on October 23 & 24, in Langley.
- Report from Simon Fraser University – brochure provided.
- 40% coupon to 'It's About Thyme' nursery on Meadow Avenue in Burnaby.

Reminder that articles for the BRAGS newsletter are to be submitted to Lanny Hui. New members are encouraged to forward Lanny a brief article about their gardening interests, questions, and/or feedback for the newsletter. p\_lanny@yahoo.com

5. Standing Committee Reports

Membership/Welcome – Lois Brown for Faye Kilpatrick

- A total of 20 members and 2 guests were in attendance. Reminder that there will be no raffle until November.
- Susan Brandl spoke about submitting nominations at AGM in December for upcoming Executive positions.
- Rhodofest – nothing to report

6. Committee Chair Reports

Plant Sale – April 17, 2011 – Lanny needs someone to oversee the plant sale on Sunday, April 17, 2011. She will be available for the preparation and pre-planning.

Meeting adjourned, followed by an A/V presentation and enlightening talk on "Roses" by Brad Jalbert of Select Roses in Langley. Brad kindly donated 2 gift certificates, each for a rose bush, and a copy of his book "Roses for B.C.", won by Keith Harris. We will hold onto the certificates for a future raffle, or for the Christmas meeting.

June Dodson/for Linda Cholette, Secretary

## What did you know about native Canadian orchids?

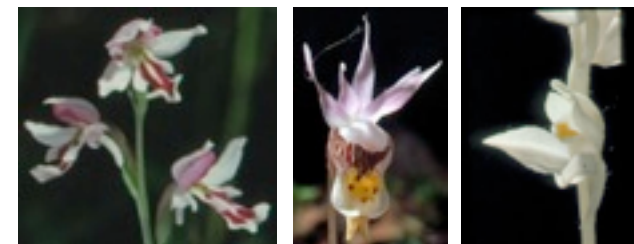
Source: [www.canadianorchidcongress.ca](http://www.canadianorchidcongress.ca)

Many orchids are to be found across Canada. They are all terrestrial. Some are showy and photogenic such as the well-known lady's-slippers. Many others are inconspicuous and easily overlooked by the casual observer. Some are found only in the deep seclusion of almost impenetrable fens and quaking bogs with lots of mosquitos for company. Others inhabit mysterious tranquil places waiting to thrill the visitor.

Our native orchids live in habitats that are very special to their needs. They do not survive moving to other locations, especially our gardens and flower beds. Please do not dig them up or pick the flowers. Leave them in "the wild" for others to enjoy.

Below is the list of orchids that grow in British Columbia:

- Amerorchis rotundifolia*, Small Round Leaved Orchis
- Calypso bulbosa*, Calypso, Fairy Slipper
- Cephalanthera austinae*, Phantom Orchid, Snow Orchid (endangered, threatened species)



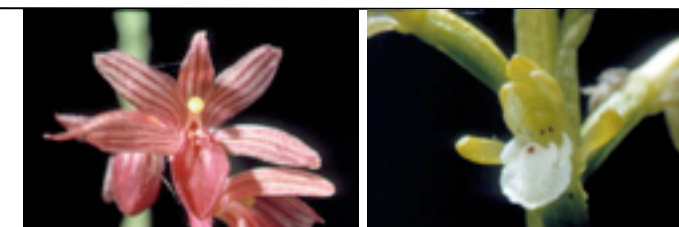
(1) (2) (3)

- Coeloglossum viride*, Long Bracted Green Orchid, Frog Orchid
- Corallorhiza maculata*, Spotted Coralroot, Large Coralroot
- Corallorhiza mertensiana*, Western Coralroot



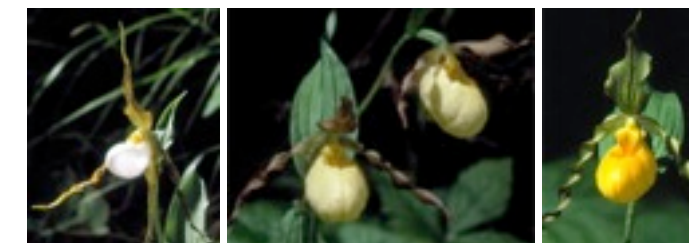
(4) (5) (6)

- Corallorhiza striata*, Lindley
- Corallorhiza trifida*, Early Coralroot, Northern Coralroot



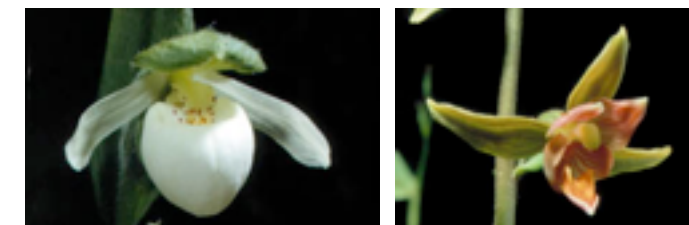
(7) (8)

- Cypripedium montanum*, Mountain Lady's-slipper
- Cypripedium parviflorum* var. *makasin*, Northern Small-flowered Yellow Lady's-slipper
- Cypripedium parviflorum* var. *pubescens*, Large Yellow Lady's-slipper



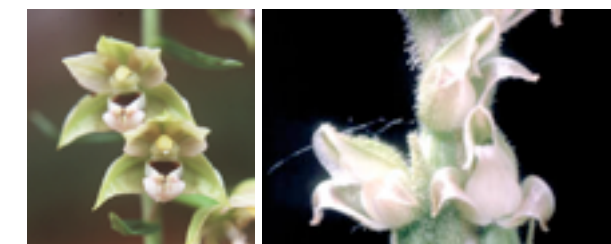
(9) (10) (11)

- Cypripedium passerinum*, Sparrow's Egg Lady's Slipper
- Epipactis gigantea*, Stream Orchid (sensitive to change in habitat)



(12) (13)

- Epipactis helleborine*, Broad Leaved Helleborine
- Goodyera oblongifolia*, Menzies Rattlesnake Plantain, Green Leaved Rattlesnake Plantain, Giant Rattlesnake Plantain



(14) (15)

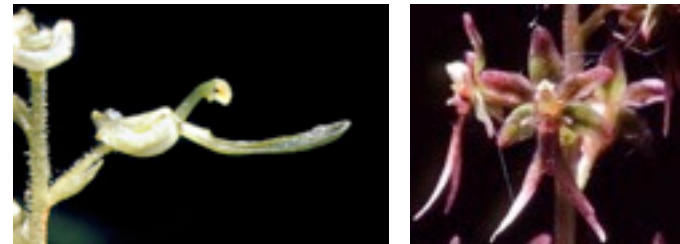


16. *Goodyera repens* var. *repens*, Creeping Rattlesnake Plantain, Lesser Rattlesnake Plantain  
 17. *Listera borealis*, Morong Northern Twayblade  
 18. *Listera caurina*, Northwest Twayblade



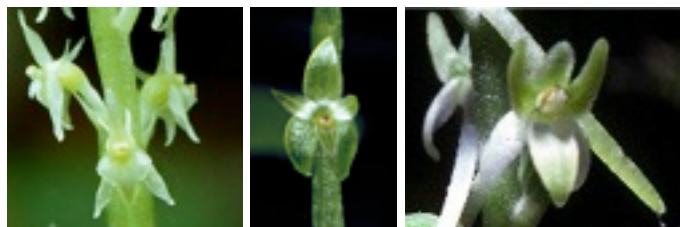
(16) (17) (18)

19. *Listera convallarioides*, Broad Lipped Twayblade  
 20. *Listera cordata*, Heart Leaved Twayblade



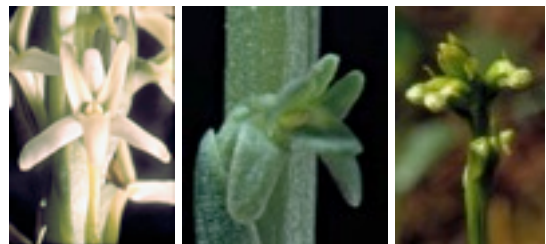
(19) (20)

21. *Malaxis monophylla*, White Adder's Mouth  
 22. *Malaxis paludosa*, Bog Adder's Mouth (sensitive to change in habitat)  
 23. *Piperia elegans*, Wood-rein Orchid



(21) (22) (23)

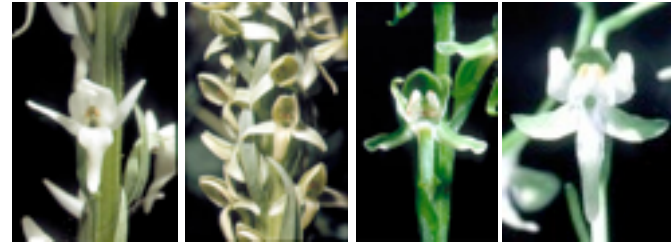
24. *Piperia maritima*, Coast Piperia  
 25. *Piperia unalascensis*, Slender-spire Orchid  
 26. *Platanthera chorisiana*, Chamisso's Orchid



(24) (25) (26)

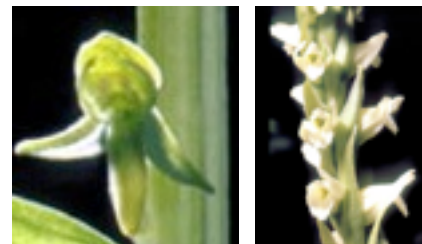
27. *Platanthera dilatata*, Tall White Bog Orchid, Fragrant White Orchid, Bog Candle  
 28. *Platanthera aquilonis*, Tall Northern Green Orchid, Northern Green Orchid, Leafy Green Orchid

29. *Platanthera obtusata*, Blunt Leaf Orchid, Blunt Leaf Rein Orchid, One Leaf Rein Orchid  
 30. *Platanthera orbiculata*, Round Leaved Orchid, Dinner Plate Orchid



(27) (28) (29) (30)

31. *Platanthera stricta*, Slender Bog Orchid  
 32. *Spiranthes romanzoffiana*, Oval Ladies' Tresses



(31) (32)



Many thanks to Brad Jalbert for his generosity in giving his time for a presentation, a Rose book, and gift certificates.

This we know... the earth does not belong to man, man belongs to earth. All things are connected, like the blood which connects one family. Whatever befalls the earth befalls the children of the earth. Man did not weave the web of life - he is merely a strand in it. Whatever he does to the web, he does to himself. - Chief Seattle, 1854

### Next Meeting: Wednesday, November 3, 2010

**November 3, 2010 "Hardy Orchid" by Bill Bischoff.** Award winning and international speaker Bill Bischoff will share his gardening passion for all orchids. Join us for an evening as he explains how one small Phalaenopsis in Toronto, that almost crushed his gardening interest, has grown to over 700 orchids grown in warm & cool green houses, and now has extended to hardy orchids grown in his Surrey garden

The meeting starts at 7 pm, Burnaby Village Museum, Main Building, on 2nd floor. Refreshment is served. All are welcome. Don't forget to bring your own mug to avoid wasting styrofoam cups! Annual membership cost \$12. Members share various gardening interests and enjoy 10% discount off regularly priced items at GardenWorks and by presenting their membership cards.

### BRAGS

#### 2010 EXECUTIVE

##### President

Judy Wellington  
434-8287

##### Vice-President

Lanny Hui  
205-9023

##### Treasurer

Lois Brown  
298-6681

##### Secretary

Linda Cholette  
298-9059

##### Past President

Susan Brandl  
433-4250

#### STANDING COMMITTEES

##### Membership

Anne Forsyth  
298-6350

##### Nominations

Susan Brandl  
433-4250

##### Publicity

Vacant

##### Rhododendron Festival

Wendy Thompson  
420-6513

#### OTHER COMMITTEES

##### Garden Tour

Vacant

##### Plant Sale

Lanny Hui  
415-4564

##### Newsletter

Lanny Hui  
415-4564

Anne & David Forsyth  
298-6350

##### Raffle & Greeting

Sheila Chowdhury  
298-1196

##### Refreshments

Helen Vaughan  
299-2014

##### Speakers

Rosemary Daviduk  
604-431-6207

##### Website

David Forsyth  
298-6350

### Future Speakers

- January 5, 2010 Ikebana Talk and Demo by Beverley-Ann Ranney.** Beverley-Ann has had a deep interest in Ikebana for many years. In 1961, she began studying ikebana at the Japanese Cultural Centre under the guidance of Shizujiko Kadoguchi, President of the Ikenobo Society of America, Toronto Chapter. In 1974, she went to Japan for advanced classes at the centuries old home school of Ikenobo. The Ikenobo family has had a direct line of 45 headmasters for life. Over the years, she progressed through the rigorous levels of ikebana until she was honoured this year with the Professor of Ikenobo 1st Grade full professorship in Ikebana. For more information about Ikebana in Vancouver, please visit [www.vancouver-ikebana.ca](http://www.vancouver-ikebana.ca)
- February 2, 2010 New Trends in Gardening by Brian Minter.** Brian's passion for plants was transformed into 32-acre [Minter Gardens](http://www.mintergardens.com) which today draws thousands of visitors each year, and has become a favourite destination for weddings. He is 'BC's go-to garden expert' through his experience at both the garden centre and the display gardens. As such, he has hosted countless radio and television shows, is a frequent gardening columnist, and is the author of Canadian Best Seller, [Brian Minter's New Gardening Guide - Fresh Approaches for Canadian Gardeners](http://www.brianminter.com)

### Out and About

**October 1 - March 31, 2011, Emotional Geometry** at VanDusen Botanical Garden. an exhibit of works by renowned Mexican sculptor SEBASTIAN, creator of VanDusen's Throne of Nezuahuacoyotl, in honour of the bicentennial of the Republic of Mexico. Displayed on the Great Lawn and curated by noted SEBASTIAN expert Dr. George Drake. Presented in conjunction with the Consulate General of Mexico and the Vancouver Biennale.

**Thursday, November 4, 2010, 7 pm Starting from seed, The Basics of Native Plant Seeds** with Patrick Wilson of Linnaea Nurseries presented by the Native Plant Society of BC in Van Dusen's Cedar Room. From the tiny seeds of *Mimulus guttatus* (yellow monkeyflower) to the fruit-covered achenes of *Rosa nutkana* (Nootka rose) and the winged samaras of *Acer macrophyllum* (bigleaf maple), seeds are a source of wonder – and mystery. Join propagation expert Patrick Wilson for a primer on native plant seeds, including their structure, diversity, dispersal mechanisms and more. Patrick will also talk about harvesting and storing native seeds. Admission free. Information: Dawn Hanna at 604-831-5069 or [dawnhanna@telus.net](mailto:dawnhanna@telus.net)

**Thursday, November 11, 2010, 7:30 pm, Cedar Series Lecture, Poppies and Plant Hunting on the Roof of the World** with Bill Terry at Van Dusen's Floral Hall. During a 2700 km plant-hunting road trip through Sichuan and Tibet, Mr. Terry encountered many beautiful alpine species, including *Meconopsis*. Enjoy the botanical stories from this expedition, combined with an account of the cultures and country they met. Bill's book, *Blue Heaven, Encounters with the Blue Poppy* will be available. A skilled *Meconopsis* grower, Bill owns the most diverse collection of Asiatic poppies in North America. Tickets: in advance from the Administration Office or, subject to availability, at the door on the night of the lecture. Individual tickets: Members \$10 and non-members \$15. Trio Pack: includes three tickets which can be used in any combination for lectures in 2010 - Members: \$25 (for 3), Non-members: \$40 (for 3)

**Saturday, November 13, 2010, 10 am - 12:30 pm, Garden in a Fishbowl Workshop** at Van Dusen's Cedar Room. Make a special Holiday gift for a loved one, or make yourself a beautiful fish bowl garden to enjoy for years to come. After learning a bit about the history of terrariums (Wardian cases), students will each create their own masterpiece. Price includes all required materials, including a 1-gallon glass fishbowl. Instructor: Estelle Bogoch. Cost: Members \$68 / Non-member: \$83. Call 604.878.9821 for automated phone registration or in person at the main office Monday to Friday, 10am – 4pm. For more information, please contact [educate@vandusen.org](mailto:educate@vandusen.org) or 604.257.8669